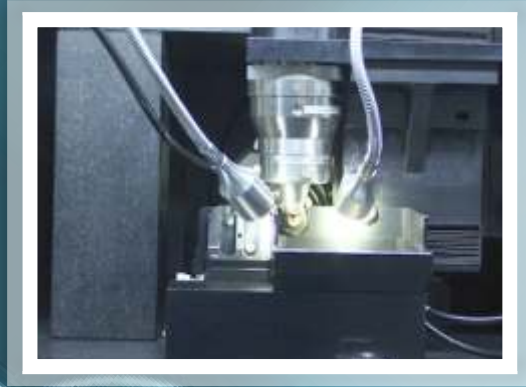


# StentMaster



Precision cutting at its best

## Key Features

- Highly precise cutting achieved with harmonization of the fiber laser, accurate CNC platform and advanced motion controlled software.
- Minimum heat effected zone
- Automatic tube feeding mechanism
- Computer vision assisted tube centering facility.
- Full digital control of all cutting process parameters
- Velocity profiling helps to minimize geometry errors in tight profiles
- Suitable for dry as well as wet cutting process.
- Machine is constructed around solid granite base and highly rigid frame structure for stable results.
- One click cutting program generation from “Cagila” software

## Specifications

- Laser: 100 Watt fiber
- Wavelength : 1090  $\pm$ 5 nm
- Tube size : up to 7.9 mm (for dry cutting), up to 3.0 mm (for wet cutting)
- Axis travel: 100 mm
- Accuracy:  $\pm$  2  $\mu$ m ( $\pm$  0.5  $\mu$ m available as option)
- Dimensions : 1200 (L) x 700 (W) x 1355 (H) (Laser cutting machine)  
745 (L) x 700 (W) x 775 (H) (Control station)
- Weight : 500 kgs. (Laser cutting machine), 125 kgs. (Control station)
- Power consumption: 1500 Watts
- Power supply: 230 VAC 50 Hz or  
110 VAC 60Hz

Distributed by:



**SAHAJANAND**  
TECHNOLOGIES (P) LTD.

Where **TECHNOLOGY**  
Becomes **REvolution**

“Sahajanand House”, Parsi Street, Saiyedpura, Surat – 395 003

Tel : +91 – 261 – 2451451 – 58 • Fax : +91 – 261 – 2427947

Web : [www.stentspect.com](http://www.stentspect.com)

E-mail : [stentinfo@stentspect.com](mailto:stentinfo@stentspect.com)